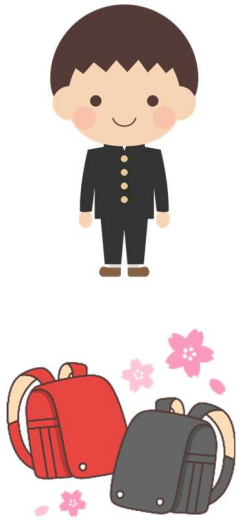


What is "Subsidies for Compulsory Education Attendance"?

"Subsidies for Compulsory Education Attendance" is a system in which Matsue City supports expenses such as school lunches so that children in economically difficult families can go to school with peace of mind.



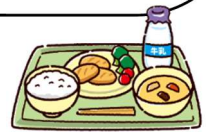
Q. Who are the persons eligible for the subsidy??

- Had "Livelihood Protection" suspended or stopped
- Had "Municipal Inhabitant Tax" exempted or deducted
- Had "Enterprise Tax on Individual" deducted
- Had "Real Property Tax" deducted
- Had "National Pension Premium" reduced by 1/2 or more
- Had "National Health Insurance Premium" deducted
- Receiving Child Rearing Allowance
- Receiving "Livelihood Loan"
- be in a financially difficult situation because of a low income, etc...



Q. What are the Main Subsidies?

- Admission reserve (new elementary and junior high school first graders only)
- School supplies, school supplies costs • School lunch fee
- School excursion expenses • School illness treatment costs, etc...



Q. How to apply?

You can complete the procedure at the elementary and junior high school where your child is enrolled.

If you have any questions or would like to apply, please contact the office of your school.

Koto Junior High School (☎ 2 5 - 9 2 2 0)

Oba Elementary School (☎ 2 1 - 4 2 3 9)

Chikuya Elementary School (☎ 3 7 - 0 5 3 5)